

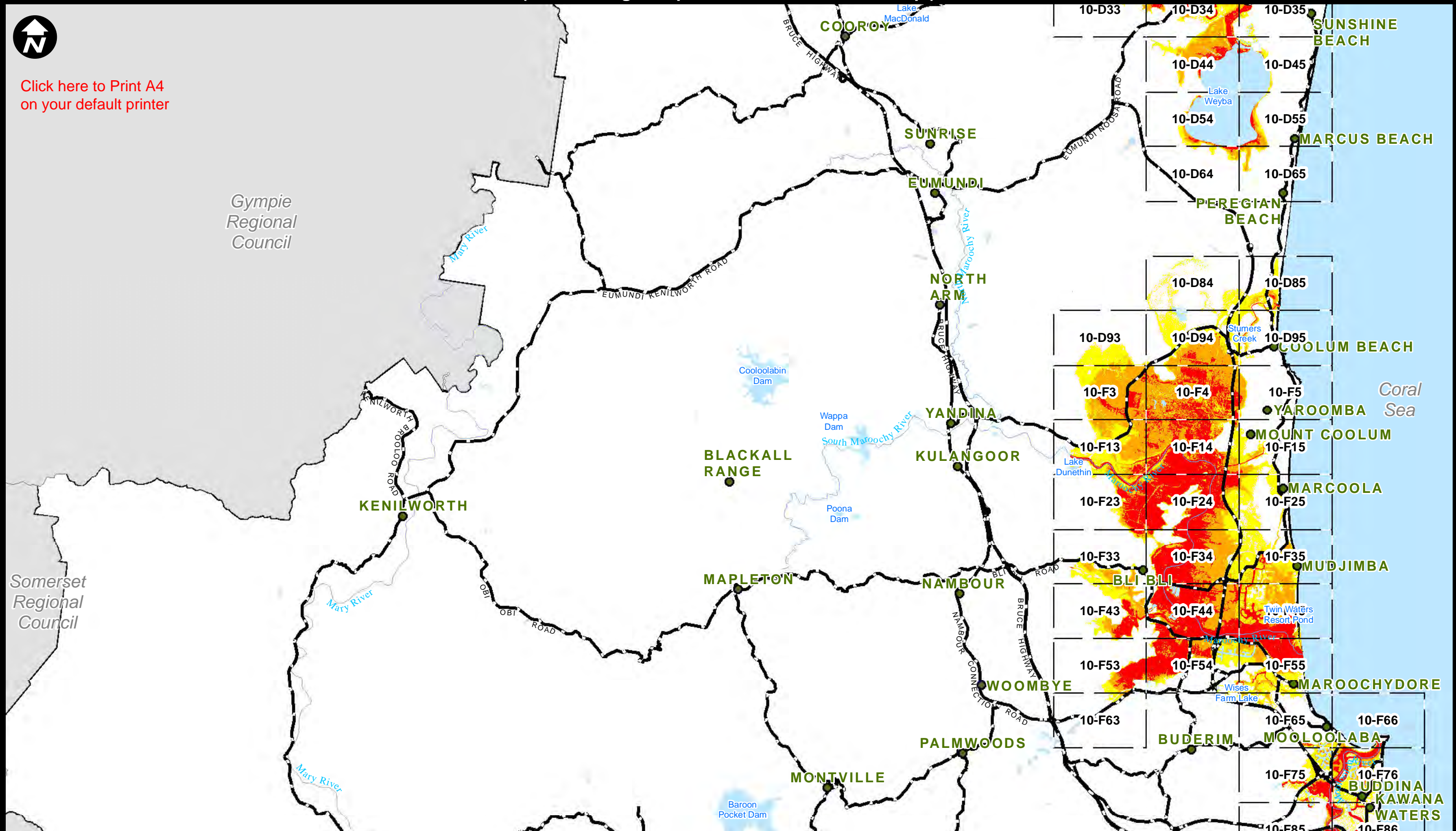
(Click on a grid square for a more detailed map)



Click here to Print A4 on your default printer

Gympie Regional Council

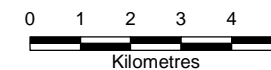
Somerset Regional Council



- This area will be the first to flood when the Bureau of Meteorology (BOM) predicts a stormtide of 1 metre above HAT.*
 - This area will flood after the red zone when the Bureau of Meteorology (BOM) predicts a stormtide of 1-2 metres above HAT.
 - This area will flood after the orange zone when the Bureau of Meteorology (BOM) predicts a stormtide of 2-3 metres above HAT.
- * HAT- Highest Astronomical Tide levels are similar to King Tide levels.

Major Roads

These routes can flood. Check council's website to ensure roads are open.



Disclaimer
 This map has been produced in response to the recommendations of the Qld Floods Commission of Inquiry to promote awareness of potential flood prone areas. The information is of a general nature and is not intended to replace the need for site specific enquiry of Council records or to be a substitute for more formal flooding investigation required in any development approval or permit process.
 The information presented on this map is either model based, derived from historic flood data, or estimated using the best judgement of a professional hydrologist. The map is not accurate to the scale of a specific property and for some areas flood information is not available. While every care is taken to ensure the accuracy of this product, neither the Sunshine Coast Council nor the State of Queensland makes any representations or warranties about its accuracy, liability, completeness or suitability for any particular purpose and disclaims all responsibility and all liability (including without limitation, liability in negligence) for losses, damages (including indirect or consequential damage) and costs that may occur as a result of the product being inaccurate or incomplete in any way or for any reason.